

Flowing Twill Purse

Wendy L. Reary

St. Louis Basketry Supply, Inc.

www.stlbasketry.com

Materials:

2" x 9" rectangular wood base

Spokes: 1/4" ff - 48 @ 10" (opt. glue)

Weavers: 11/64" f/o dyed

Rim Row: 1/4" ff

Rims: 3/8" half round

Rim Filler: #6 rr

Lashing: 4-ply waxed linen

Leather Strap 1/2" wide x desired length (sample-48")

2 beads to secure strap ends

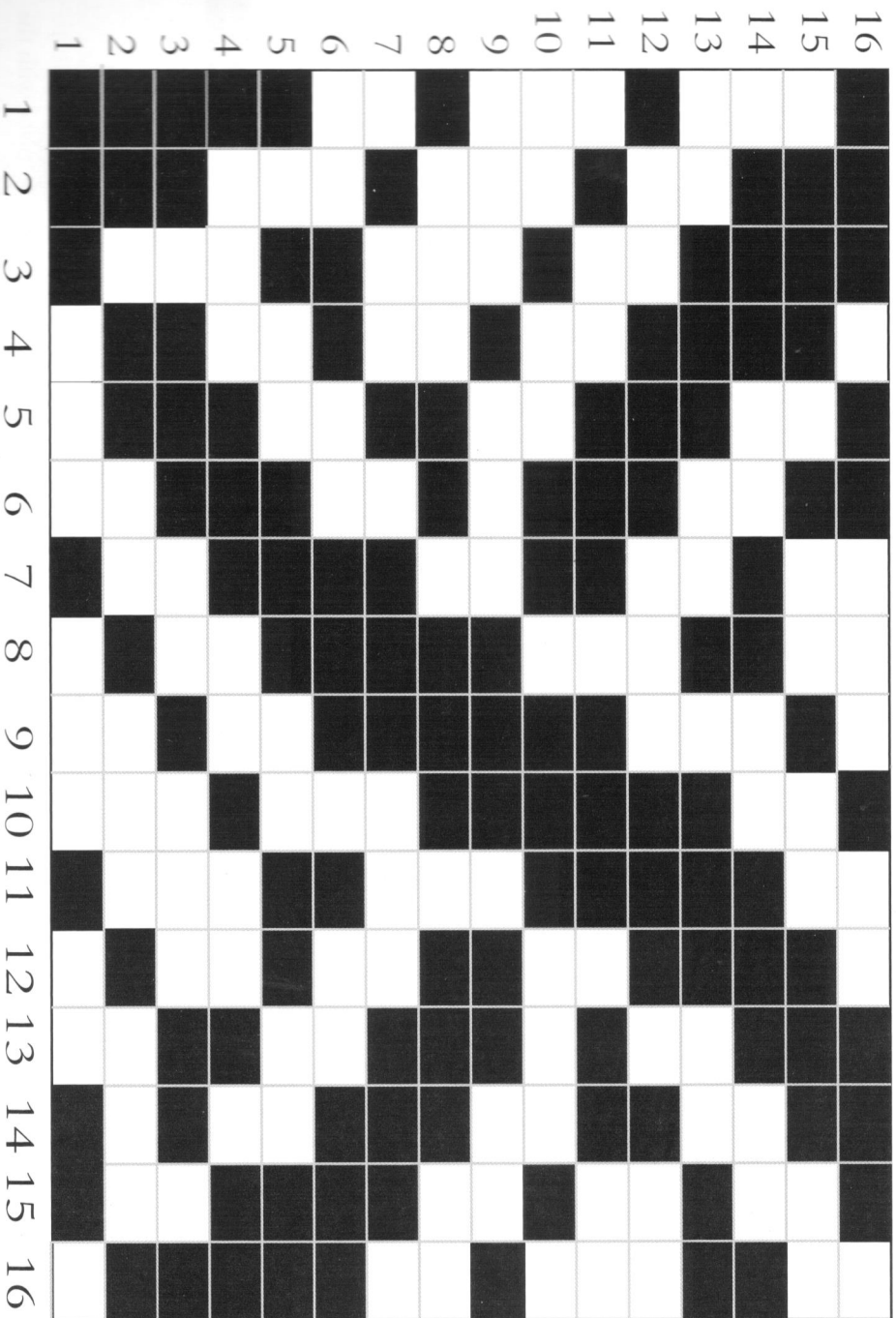


10" x 5" x 8"

Note: Before beginning, determine if you will be shimming or gluing the spokes. Due to the straight sides of the base you will need to do one or the other. I glued the dry spokes into the base then sprayed with water the next day to dampen them for weaving.

1. Insert the spokes evenly, rough side up, as follows: eighteen to each long side, one in each corner, and four at each end. You will upset as you weave the sides.
2. All rows are start and stop. Follow the graph starting at the lower left corner on a long side. Example: row one – under 1, over 3, under 3, over 1, under 3, over 1, under 2, over 2, three times. Don't worry if it doesn't hold together right away, it'll take four rows to incorporate all the spokes. You can always go back and adjust the first few rows after that. Continue following the graph, starting each row at a different spot to avoid a build up of over-laid weavers. I wove a total of 40 rows (2 1/2 pattern repeats)
3. With 1/4" ff, weave one row over one / under one.
4. Pack weaving well. Tuck all outside spokes to the inside and cut the inside spokes even with the top row of weaving.
5. Measure and clip on 3/8" half round rims, shaving the overlaps, which should be next to, not over, each other. Use two small pieces of leather or several thicknesses of 1/2" ff as spacers on the short ends to leave room for the leather handle strap. Just place them between the rims where the strap will go. Fill the rim with #6rr then double lash with waxed linen.
6. After staining, remove spacers. Poke a small hole 1/2" from the ends on the strap. Insert the strap end between the rim and the outside of the basket. They should extend down, about 1", below the top. Thread a bead with waxed linen, put both ends of the thread through the hole in the strap, through the wall of the basket and on either side of one of the center end spokes. Tie ends together securely. Repeat on the other side.

PATTERN GRAPH



over



under